



Dedicated to Design.  
Committed to Quality.

# Seating Upholstery

& Finish Color Selection Guide  
2020





**High-Tech / Quick-Ship**



New Hempstead Gr. 2  
NH369 Navy (QS)



U R Grounded Gr. C  
Navy (QS, ESD)



Vacuum Formed Formfit II Vinyl  
Slate Blue (CR)



Microcon Gr. B  
Blue (QS, ESD, CR)



New Hempstead Gr. 2  
NH333 Black (QS)



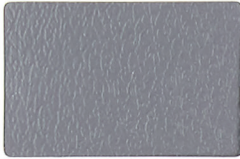
U R Grounded Gr. C  
Ebony (QS, ESD)



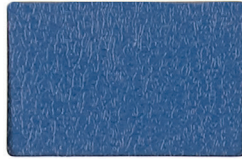
Vacuum Formed Formfit II Vinyl  
Black (CR)



Microcon Gr. B  
Black (QS, ESD, CR)



Patriot Plus 2.0 Gr. 2  
P28605 Charcoal (QS, CR)



Patriot Plus 2.0 Gr. 2  
P28542 Royal (QS, CR)



Patriot Plus 2.0 Gr. 2  
P28540 Black (QS, CR)



Conductive Vinyl Gr. A  
Black (ESD)

**Moccasin 2.0  
Grade 2 Vinyl (CR)**



MOC26 MOC-Bramble



MOC35 MOC-Lasso



MOC-Milieu  
MOC10



MOC-Shale  
MOC32



MOC24 MOC-Buck



MOC17 MOC-Blue



MOC37 MOC-Carob



MOC-Rustic Red



MOC-Saddle



MOC-Classic



MOC-Onyx

**Patriot Plus 2.0  
Grade 2 Vinyl (CR)**



P28532 Bordeaux



P2864 Concrete



P28628 Sea



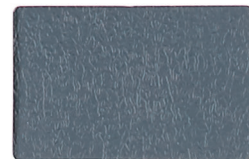
P28539 Gunmetal



P28517 Mocha



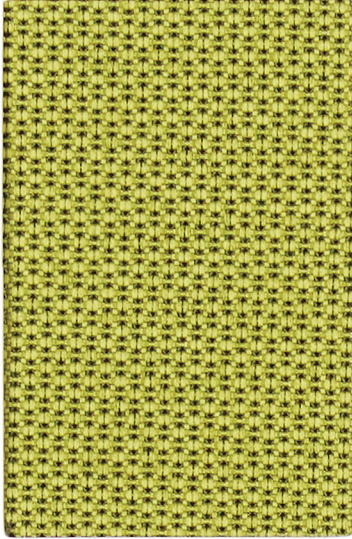
P28572 Blue Ridge



P28605 Charcoal



**Bryant Park**  
Grade 2 Fabric



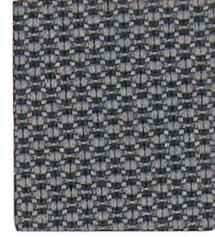
6561 Crocodile



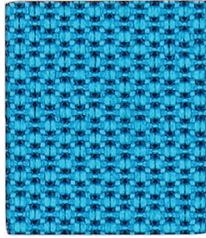
6551 Marigold



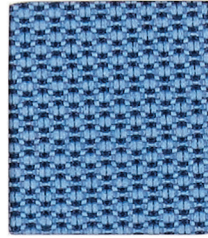
6555 Pumice



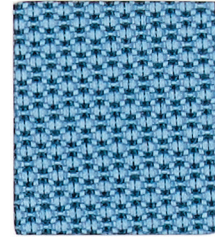
6560 Gunmetal



6553 Nile



6563 Night Shadow



6558 Saxon Blue

**Tribeca**  
Grade 2 Fabric



63753 Teal



63747 Burnt Orange



63745 Silver



63757 Shadow



63750 Cassis

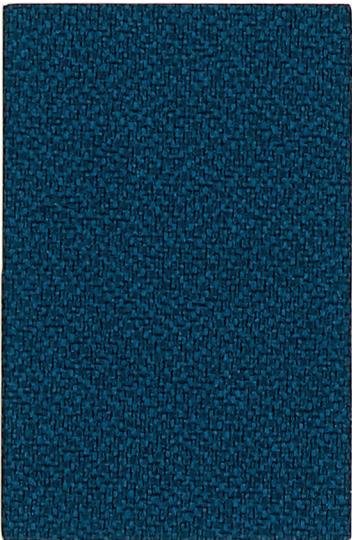


63746 Slate

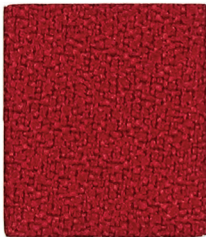


63754 Regatta

**New Hempstead**  
Grade 2 Fabric



NH359 Azure



NH406 Fire



NH420 Jodhpurs



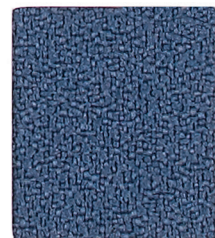
NH395 Grey



NH389 Red Red Wine



NH422 Napa



NH509 Galaxy



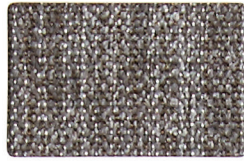
Interactive Samples

Click on the image to order a memo sample.

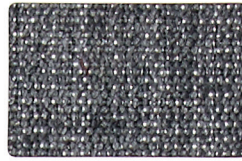
**Artisan**  
Grade 3 Fabric



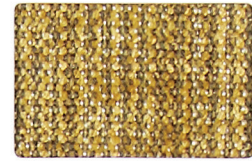
65066 Marled



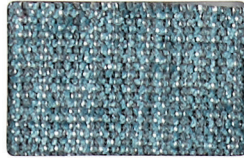
65069 London



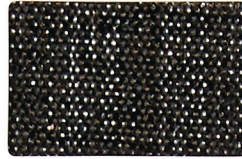
65070 Tungsten



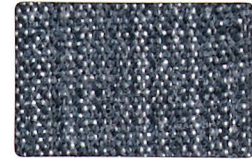
65068 Anjou



65073 Marlin



65082 Darth



65074 Seaport

**Clean Slate 2.0**  
Grade 3 Vinyl



CLN39 CLN-Indigo



CLN34 CLN-Lime



CLN27 CLN-Shark



CLN44 CLN-Maroon



CLN43 CLN-Navy



CLN48 CLN-Onyx

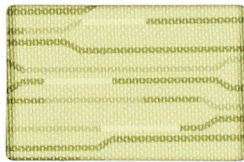


CLN22 CLN-Stone

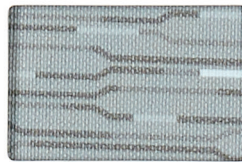
**Level\***  
Grade 3 Vinyl



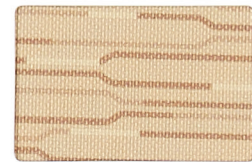
LVL52 Bavaria



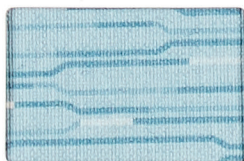
LVL50 Mojito



LVL56 Slate



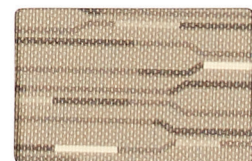
LVL54 Praline



LVL51 Aegean



LVL57 Shadow



LVL55 Tea

**Nishiki 2.0**  
Grade 3 Vinyl



Shibori



Celadon



Silver



Teak



Peacock



Obi



Sumi

\* See specification page



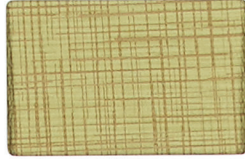
Interactive Samples

Click on the image to order a memo sample.

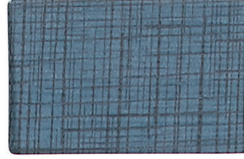
**Etch**  
Grade 4 Polyurethane  
HHI Compliant



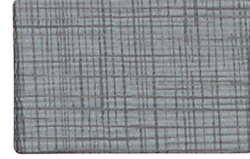
ETC32 Marsh



ETC31 Wasabi



ETC37 Dusk



ETC35 Pier



ETC30 Orange



ETC41 Collegiate



ETC39 Storm

**Silicone-Avail**  
Grade 4 Silicone  
HHI Compliant



SLA86 Taupe



SLA81 Infinity



SLA87 Marco



SLA70 Stone



SLA72 Henna



SLA93 Indigo

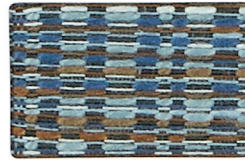


SLA94 Raven

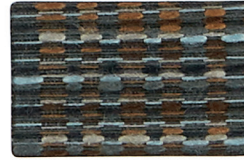
**Recharge with Celliant®**  
Grade 4 Fabric



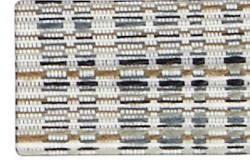
65162 Cayenne



65166 Coastline



65168 Dark Chocolate



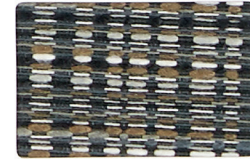
65160 Mineral



65164 Ocean



65167 Wave



65165 Peppercorn

**Kinetic**  
Grade 4 Fabric / Crypton



64430 Sunset



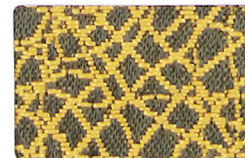
64435 Bering



64431 Shale



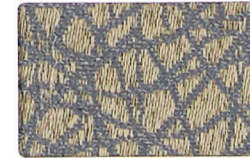
64433 Quartz



64429 Acacia



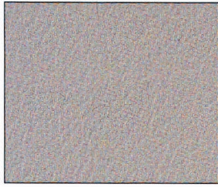
64436 After Dark



64437 Cadmium



### Grade 3 – Phoenix\* Vinyl Upholsteries



**PH65 Pearl**



**PH64 Nearly Black**



**PH62 Claret**



**PH63 Navy**

\*See specification page.

### Colors for GG Series Chairs



**Navy Blue**



**Black**

Please note: Actual colors may differ from those shown.

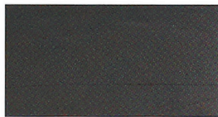
### Standard Metal Part Powder Coat Finish\*



**06 Black**

\*Chrome available for additional cost.

### Shell Colors for KX Series Chairs



**Nordic Black**



**Pacific Blue**

Please note: Actual colors of upholstery may differ from those shown here. Swatches are available upon request.

### Performance Attributes

Pattern	Enhanced Soil/Stain Protection	Fluid-Barrier Protection	Extreme Durability $\geq 100,000$ dr	Antimicrobial Protection	Bleach-Solution Cleanable	HHI Compliant	No Flame Retardant Additive (AB2998 Compliant)	Reduced Environmental Impact
<i>Artisan</i>	•		•				•	GREENGUARD Gold
<i>Bryant Park</i>	•		•				•	GREENGUARD Gold
<i>Clean Slate</i>	•	•	•	please inquire	•		•	GREENGUARD
<i>Etch</i>	•	•	•		•	•	•	GREENGUARD
<i>Kinetic</i>	•	•		•	•		•	GREENGUARD Gold
<i>Level</i>	•	•	•	•	•			GREENGUARD
<i>Moccasin</i>	•	•	•		•		•	GREENGUARD
<i>New Hempstead</i>	•		•				•	GREENGUARD Gold
<i>Nishiki</i>	•	•	•		•			GREENGUARD
<i>Patriot Plus 2.0</i>	•	•	•		•		•	GREENGUARD
<i>Recharge with Celliant®</i>	•		•		•		•	GREENGUARD Gold
<i>Silicone-Avail</i>	•	•	•		•	•	•	GREENGUARD Gold
<i>Tribeca</i>	•		•				•	GREENGUARD Gold



## Specifications

Pattern	Content	Abrasion Resistance	Protective Finish	AB2998 Compliant	Cleaning Code
Artisan	100% Polyester	100,000 double rubs	Enhanced Soil and Stain Protection	•	W-S
Bryant Park	54% Post-Consumer Recycled Polyester, 46% Polyester	100,000 double rubs	Enhanced Soil and Stain Protection	•	W
Clean Slate 2.0	Vinyl Surface with Polyester Backing	100,000 double rubs	Advanced Soil and Stain Resistant Top Coat + Ink Resistance	•	W-S
Conductive Vinyl	Vinyl Coated Fabric		Dirt/Stain Resistant	•	
Etch	Polyurethane made with Polycarbonate and Polyether Resins	100,000 double rubs	Advanced Soil and Stain Resistant Top Coat + Ink Resistance	•	W
Kinetic	100% Polyester	63,000 double rubs	Crypton® Non-PFOA Soil & Stain Protection	•	W
Level	Vinyl Surface with Polyester Backing	1,000,000 double rubs	Advanced Soil and Stain Resistant Top Coat		W-S
Microcon Vinyl	Static-dissipative Surface with Polyester Backing	100,000 double rubs		•	W*
Moccasin 2.0	Vinyl Surface with Polyester Backing	100,000 double rubs	Soil and Stain Resistant Top Coat	•	W-S
New Hempstead	100% Polyester	750,000 double rubs	Non-PFOA Stain Resistant	•	W-S
Nishiki 2.0	Vinyl Surface with Polyester Knit Backing	250,000 double rubs	Advanced Soil and Stain Resistant Top Coat	•	W-S
Patriot Plus 2.0	Vinyl Surface with Polyester/Cotton Backing	100,000 Double rubs	Advanced Soil and Stain Resistant Top Coat	•	W-S
Phoenix	Contract Vinyl	250,000 double rubs	Enhanced Soil/Stain Protection		W-S
Recharge with Celliant®	58% Polyester, 42% Celliant® Polyester	100,000 double rubs	Non-PFOA Stain Resistant	•	W-S
Silicone-Avail	100% Silicone	200,000 double rubs	Enhanced ink resistance, fade resistance	•	W-S
Tribeca	100% Polyester	100,000 double rubs	Enhanced Soil and Stain Protection	•	S
U R Grounded	97.5% Nylon, 2.5% Conductrol™	100,000 double rubs	Enhanced Soil and Stain Protection	•	S
Vacuum Formed Formfit II	PVC Over Stretch Nylon Substrate	200,000 double rubs	Advanced BeautyGard®		S

Conductrol™ is a trademark of Sterling Fibers, Inc.

Nytek® is a registered trademark of Majilite Corporation, Dracul, MA 01826

Beautygard® is a registered trademark of Uniroyal Engineered Products.

\*Clean with a solution of mild liquid soap and water, then wipe with a lint-free cloth. The use of any product containing silicone, alcohol, or solvents is not recommended, as it will adversely affect the ESD properties of the materials.

### Flammability:

All patterns meet or exceed the flammability requirements of California Technical Bulletin 117-2013, Sec.1. Some patterns have been tested for other flammability specifications. These patterns may contribute to compliance when used in conjunction with other suitable components.

### Cleaning Codes:

**S:** Clean with mild, water-free solvent-based cleaners only. Do not use water. We recommend using a professional cleaning service.

**W:** Clean with water-based foam or water-based cleaner only. Do not use solvents. We recommend using a professional cleaning service.

**W-S:** For water-based stains use water-based cleaners. For oil-based stains use solvent-based cleaners. We recommend using a professional cleaning service.

**Memo Samples:** Please contact Biofit at 800.597.0246 or biofit@biofit.com.

## Stinson®

C.F. Stinson, LLC  
2849 Product Drive  
Rochester Hills, MI 48309

W cfstinson.com  
P 800 841 6279  
F 248 299 3884



**Dedicated to Design.  
Committed to Quality.**

BioFit Engineered Products  
P.O. Box 109  
Waterville, OH 43566-0109  
USA

©2016 BioFit Engineered Products #001760

www.biofit.com

800.597.0246